

Submitted by: Chair of the Assembly at the
Request of the Mayor
Prepared by: Anchorage Water & Wastewater
Utility
For reading: May 20, 2008

See AR 2008-101(S)

ANCHORAGE, ALASKA
AR No. 2008-101

1 A RESOLUTION OF THE MUNICIPALITY OF ANCHORAGE, ALASKA, APPROVING
2 THE PUMP STATION 10 UPGRADE (SANITARY) SEWER EXTENSION AND
3 PROVIDING FOR ASSESSMENT OF BENEFITED PROPERTIES AT TIME OF SERVICE
4 CONNECTION
5

6
7 WHEREAS, Alaska State Statute 42.05.385 and AMC 19.80 mandate that when a main line
8 extension will create, or has the potential of creating, any charge or assessment against the
9 adjacent property, the extension may not be constructed unless the legislative body of each
10 municipality through which the extension passes has approved the extension; and
11

12 WHEREAS, Alaska State Statute 42.05.385.C.3 mandates that a lien or encumbrance may not
13 be levied against the property for the construction of the extension, unless the property owner
14 connects to the extension; and
15

16 WHEREAS, the Anchorage Water and Wastewater Utility (AWWU), plans to extend an 12-inch
17 sewer main in Sonstrom Drive northeast to the proposed Pump Station 10; and
18

19 WHEREAS, the extension of the sewer line will specially benefit and provide sewer service to
20 two (2) properties previously not benefited, and in doing so will create potential assessments
21 against them; and
22

23 WHEREAS, at its May 7, 2008 meeting the AWWU Authority Board supported this resolution,
24 now, therefore
25

26 **THE ANCHORAGE ASSEMBLY RESOLVES:**
27

28 **Section 1.** It is in the best interest of the community that said sewer main improvements
29 proceed.
30

31 **Section 2.** AWWU shall keep an accurate account of all costs of the sewer main
32 improvements.
33

34 **Section 3.** After the sewer main improvements have been completed and the costs of the
35 sewer line approved, the Mayor shall cause the computation of all applicable assessment charges.
36

37 **Section 4.** At such time as the property cited on the attached assessment roll connects to the
38 sewer main, the respective pro-rata assessment for the sewer line shall be levied in accordance
39 with Municipal Codes and the Anchorage Wastewater Utility Tariff in effect at the time.

1 **Section 5.** A special assessment Collection Charge, as authorized in Rules Section 7.4 and
2 8.7 of the Anchorage Wastewater Utility Tariff, in effect at the time the assessment is levied, will
3 be charged to those properties identified in this resolution.
4

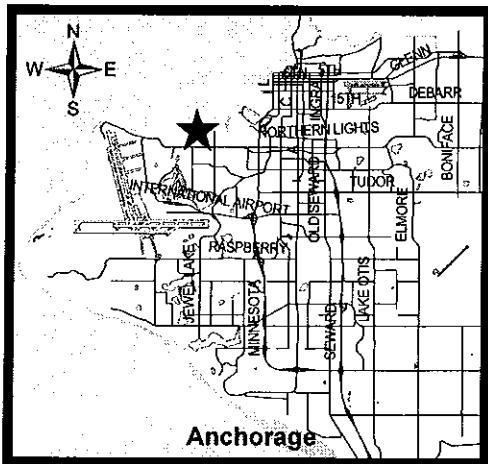
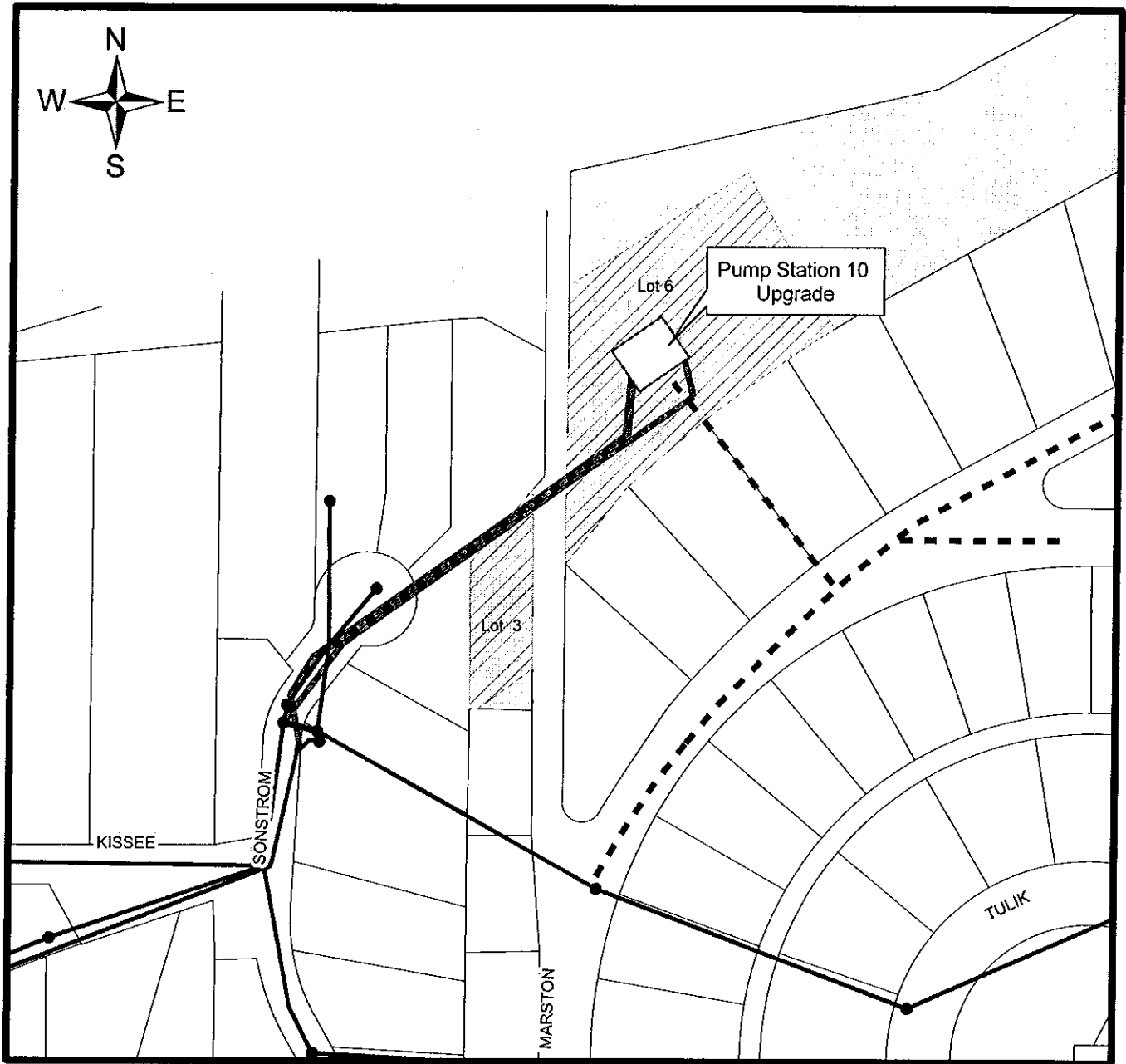
5 **Section 6.** This resolution shall be effective immediately upon passage and approval by the
6 Assembly.
7

8 PASSED and APPROVED by the Anchorage Assembly this _____ day of
9 _____, 2008.
10

11
12
13 _____
14 Chair of the Assembly






15 ATTEST:
16
17

18 _____
19 Municipal Clerk



Maps Not-to-Scale

Legend

-  Existing Sewer Main
-  Proposed Sewer Main
-  Proposed LID Main
-  Benefited Area
-  Parcels in this Project



Map Created
by AJU
3/17/2008

Pump Station 10 Upgrade 2363

Anchorage Water & Wastewater Utility

PUMP STATION 10 UPGRADE
 Capital Improvement Project - Sewer
 Estimated Assessment Roll AMS 2363

Line No.	Tax Code	Legal Description	Total Area		Lateral		Rate per		Trunk Assessable Area		Rate per		Trunk Principal		Total Principal		Owner
			Area		Area	Sq. Ft.	Sq. Ft.	Area	Sq. Ft.	Sq. Ft.	Area	Sq. Ft.	Principal	Principal	Principal	Principal	
1	001-195-01	PETES LT 3	10,221		9,218	\$1.13	\$1.13	\$10,416.34	10,221	10,221	\$0.03	\$306.63	\$10,722.97	\$306.63	\$10,722.97	DURST REVOCABLE TRUST DURST R N & D H	
2	001-193-39	SIMONSON HOMESTEAD LT 6 REM AFTER PLAT P-48B EXTENDING TO MEAN HIGH TIDE	192,766		35,021	\$1.13	\$1.13	\$39,573.73	144,575	144,575	\$0.03	\$4,337.25	\$43,910.98	\$4,337.25	\$43,910.98	MCA REAL ESTATE SERVICES	
			Total				\$49,990.07						\$4,643.88		\$54,633.95		

MUNICIPALITY OF ANCHORAGE

ASSEMBLY MEMORANDUM

No. AM 329-2008

Meeting Date: May 20, 2008

From: Mayor

Subject: A RESOLUTION OF THE MUNICIPALITY OF ANCHORAGE, ALASKA, APPROVING THE PUMP STATION 10 UPGRADE (SANITARY) SEWER EXTENSION AND PROVIDING FOR ASSESSMENT OF BENEFITED PROPERTIES AT TIME OF SERVICE CONNECTION

AMC 19.80 and A.S. 42.05.385 require the Assembly's approval to construct a main extension where the extension will create charges or assessments against the adjacent properties. A public hearing is not required prior to Assembly action per AMC 19.80.010.B.4. All affected property owners have submitted affidavits which state their non-opposition to approval.

The Anchorage Water & Wastewater Utility (AWWU) plans to construct an 12-inch sewer main in Sonstrom Drive northeast to the proposed Pump Station 10. By doing so, sewer service will be available to two (2) parcels.

The total sewer main extension project costs will initially be borne by AWWU. When the newly benefited and previously unassessed parcels connect to the sewer main, AWWU shall recover a portion of the costs through the Levy Upon Connection assessment procedures as authorized by the current Municipal Codes and Utility Tariff.

The passage of this resolution will have a fiscal impact on one (1) Municipal owned parcel.

Item #	Tax Code	Legal Description	Municipal Authority	Est. Lateral Assessment
2	001-193-39	Simonson Homestead Lt. 6 REM After Plat P-48B Extending To Mean High Tide	Real Estate Services	\$39,573.73

The AWWU Board reviewed and endorsed this resolution at its regular meeting of May 7, 2008.

THE ADMINISTRATION RECOMMENDS APPROVAL OF A RESOLUTION OF THE MUNICIPALITY OF ANCHORAGE, ALASKA, APPROVING THE PUMP STATION 10 UPGRADE (SANITARY) SEWER EXTENSION AND PROVIDING FOR ASSESSMENT OF BENEFITED PROPERTIES AT TIME OF SERVICE CONNECTION.

Prepared by: Anchorage Water and Wastewater Utility
 Recommended by: Mark Premo, P.E., General Manager, AWWU
 Concur: Michael K. Abbott, Municipal Manager
 Respectfully submitted: Mark Begich, Mayor

Content ID: 006386

Type: AR_AllOther - All Other Resolutions

Title: A RESOLUTION OF THE MUNICIPALITY OF ANCHORAGE, ALASKA, APPROVING THE PUMP STATION 10 UPGRADE (SANITARY) SEWER EXTENSION AND PROVIDING FOR ASSESSMENT OF BENEFITED PROPERTIES AT TIME OF SERVICE CONNECTION

Author: gibsonam

Initiating Dept: AWWU

Date Prepared: 5/8/08 4:17 PM

Director Name: Mark Premo

Assembly Meeting Date: 5/20/08

Public Hearing Date: 6/10/08

2008 MAY -9 PM 1:14
MUNICIPALITY OF ANCHORAGE

Workflow Name	Action Date	Action	User	Security Group	Content ID
Clerk_Admin_SubWorkflow	5/9/08 11:08 AM	Exit	Heather Handyside	Public	006386
MuniMgrCoord_SubWorkflow	5/9/08 11:08 AM	Approve	Heather Handyside	Public	006386
MuniManager_SubWorkflow	5/9/08 11:02 AM	Approve	Michael Abbott	Public	006386
AWWU_SubWorkflow	5/8/08 4:52 PM	Approve	Mark Premo	Public	006386
AllOtherARWorkflow	5/8/08 4:47 PM	Checkin	Alyssa Gibson	Public	006386
AWWU_SubWorkflow	5/8/08 4:30 PM	Reject	Mark Premo	Public	006386
AllOtherARWorkflow	5/8/08 4:17 PM	Checkin	Alyssa Gibson	Public	006386